



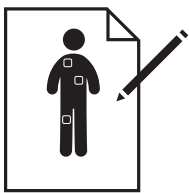
Patient is prepared,
room is well illuminated



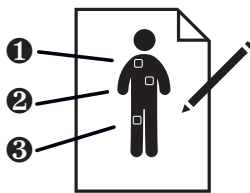
Visual examination with
the HEINE DELTA 20T



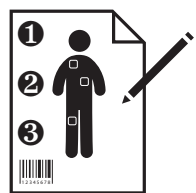
Mark relevant naevi



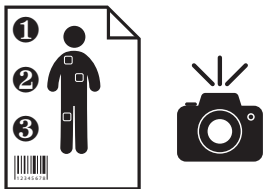
Enter the exact position of all naevi
in the body scheme
([↓ www.heine.com](http://www.heine.com))



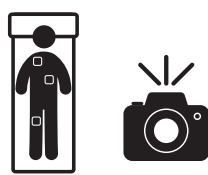
Number the naevi in the right order
(important for the routine check-up)



Write the patient number on
the body scheme



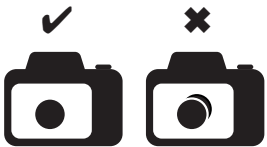
Take a photograph of
the marked body scheme



Select full-screen mode on the camera/
Take a full-screen picture of the whole body



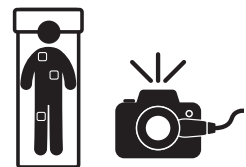
Select setting for dermatoscopic pictures/
Connect dermatoscope with camera



Check the image quality



Use the toggle function in video mode
to see the blink sign



Take dermatoscopic pictures
in a particular order



Image transfer / Rename / Store images
in patient directory



If necessary, compare with older pictures
in the presence of the patient

