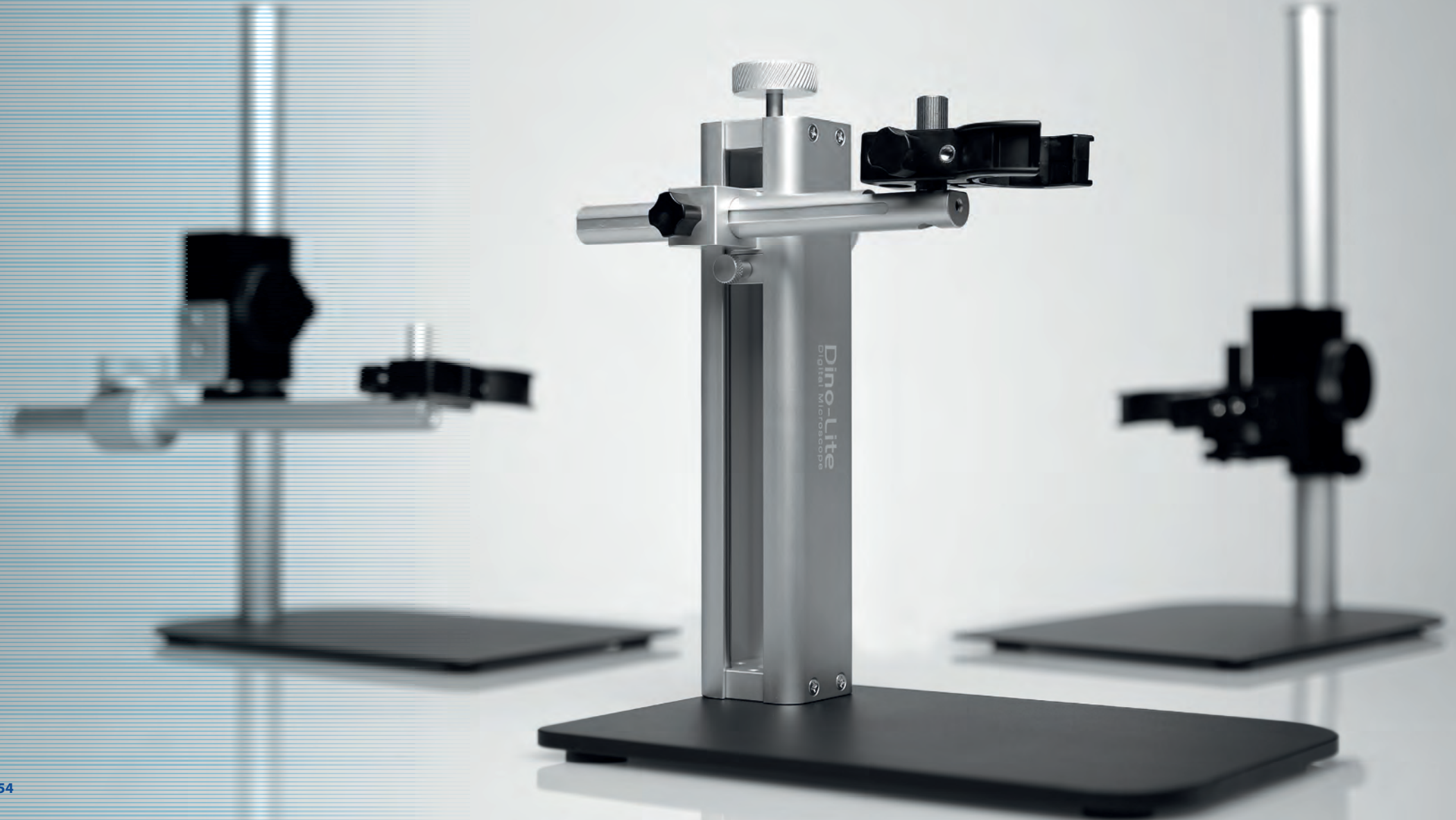


Dino-Lite accessories



Dino-Lite accessories - professional stands

More information on: www.dino-lite.eu/professionalstands

A sturdy and reliable stand solution is a must-have for your high precision Dino-Lite digital microscope. A broad range of stands, caps, microscope tables and other accessories is offered. From affordable basic stands to a square metal base column stand. Or from an advanced XY table to a USB powered backlight. All original Dino-Lite accessories are made at the same high quality design and construction level.



RK-10A

A sturdy and high-end professional stand solution. It is constructed of resilient stainless steel and lightweight aluminum for a precise fine-focus adjustment and a quick release function.



RK-06A

The Dino-Lite RK-06A stand is a sturdy and stable mid-range stand solution that can be used with all Dino-Lite digital microscopes.

Also available: RK-06-AE ESD safe version.



RK-10-FX

Flexible arm extension



RK-10-VX

Vertical arm extension



RK-10-PX

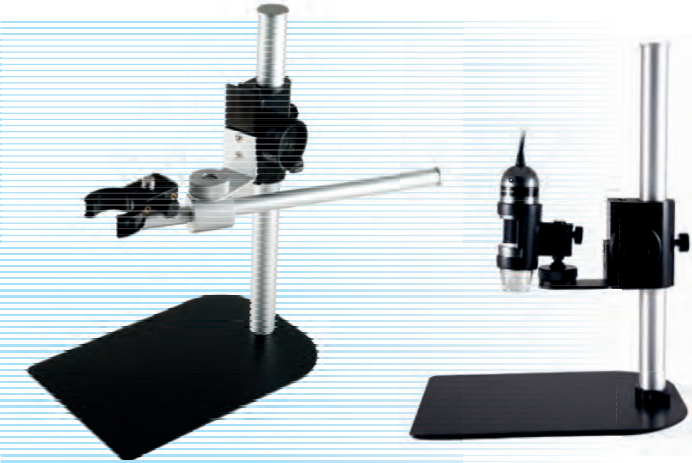
XY positioning arm with accurate and smooth adjustment options



RK-10-EX

Additional horizontal arm (included with RK-10A & RK-06A)

Dino-Lite accessories - professional stands



MS36B

Square metal base with column and support providing several adaptable heights. It has a horizontal beam for additional flexibility.

Also available: MS36BE - ESD safe version.



MS35B

Square metal base with column and support providing several adaptable heights. It is a stable vertical desktop stand to be used with all Dino-Lite microscopes.

Also available: MS35BE - ESD safe version.



MS34B

For precision focus and stable viewing in a compact design. Due to the precision vertical movement of the holster, a steady view can be obtained, even at higher magnifications.



RK-02

A heavy duty gooseneck stand



MS15X

High precision X/Y table



MSAK810

Adjustable flex arm which can be attached to the pole of a MS35B/MS36B



MS52BA2

The MS52BA2 is a combination of the rigid MS52B articulating flex-arm and a desktop base rack



MS-W1

Special stand for cylinder surfaces or to roll on flat surfaces.

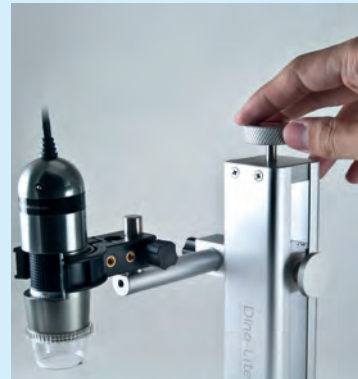
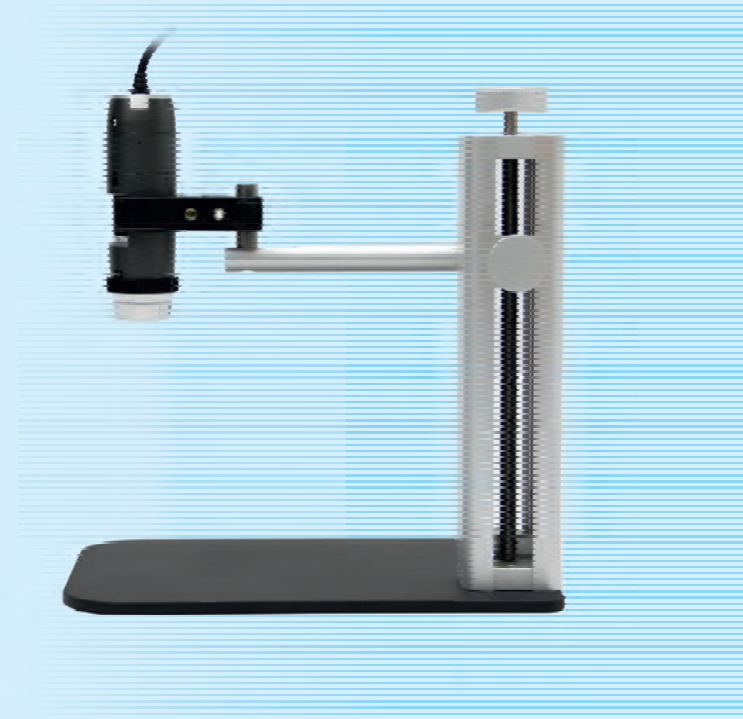
recommended product More information on: www.dino-lite.eu/rk10a

RK-10A

High-end stand - 15cm range with 360-degree rotation

A sturdy and stable high-end stand solution. The Dino-Lite RK-10A is a sturdy and stable high-end stand solution that can be used with all the professional Dino-Lite models. It is constructed of resilient stainless steel and lightweight aluminum and offers a very precise fine-focus adjustment as well as a quick release function.

The quick release button allows for fast and convenient vertical movement and the fine-focus adjustment knob is especially useful at high magnification. This model also includes an adjustable safety stop to prevent the microscope from touching the specimen. Its adjustable horizontal arm has a 15cm range with 360-degree rotation and the additional arm (included) increases its effective range to observe larger objects. With these features, the RK-10A is the ideal accessory for precise orientation and positioning for maximum productivity and ease of use in a wide range of environments including industrial, scientific and laboratory settings.



Dino-Lite accessories - basic stands

More information on: www.dino-lite.eu/basicstands

Dino-Lite accessories - basic stands



MS33W
Round metal base with flexible arm and holder for the Dino-Lite.



MS23B
The MS23B is a desktop clamp with flexible gooseneck that can be clamped to a desktop.



MS12C
The MS12C consists of a base unit with two insert adapters.



HD-P1
Universal holder for Basic Dino-Lite models.



HD-M1
Aluminium holder for Dino-Lite.



HL-2
Universal holder for Basic Dino-Lite models.

Dino-Lite accessories - holders and adapters

Dino-Lite accessories - light & control www.dino-lite.eu/lightcontrol



BL-CDW

Brightfield/Darkfield Backlight Illuminator. The Dino-Lite Backlight stage BL-CDW allows two different types of lighting: brightfield and darkfield.



SW-F1

Foot pedal accessory allowing you to take a picture with your foot. No additional software is required, simply plug in the device into your USB port and it is ready to use.



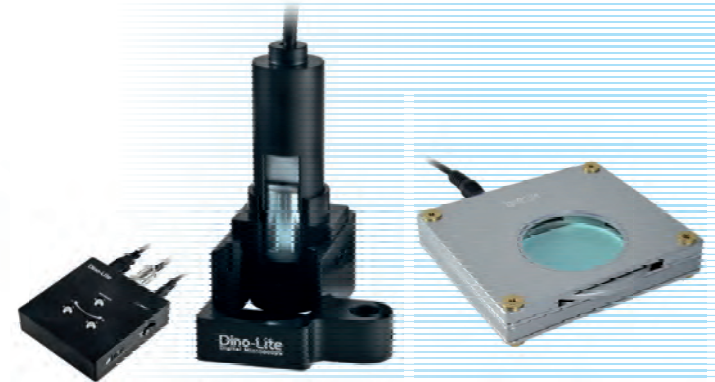
N3C-R

The N3C-R is a passive ring light solution that helps to reveal more details by generating shadow-less illumination (Edge LWD models only)



N3C-A

The N3C-A coaxial light cap is a useful accessory for the Dino-Lite Edge models from the Long Working Distance range.



KM-01

The KM-01 can be used to control the Dino-Lite focus wheel without touching the device. This is especially useful when the Dino-Lite needs to be isolated during use.

BL-ZW1

USB or DC powered backlight with a built in, freely rotatable polarizer.

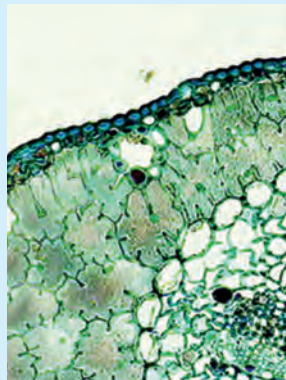
recommended product More information on: www.dino-lite.eu/bl-cdw

BL-CDW, dark field / bright field backlight

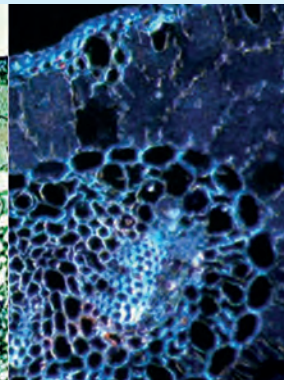
The Dino-Lite backlight stage BL-CDW allows two different types of lighting: brightfield and darkfield. In the brightfield mode, the light is transmitted from below the sample that shows up vividly showing the form and structure of the specimen on a bright background. With darkfield illumination, the transmitted light will not reach the microscope and will therefore not be part of the image. The image will show bright objects on an almost black background. This type of light is not only suitable for prepared specimen but also for live specimen such as flagellum, the pseudopod movement, spirochete and more. Both types of illumination allow for high contrast, clear images and adds a whole new dimension to the Dino-Lite digital handheld microscopes with magnifications over 100x.



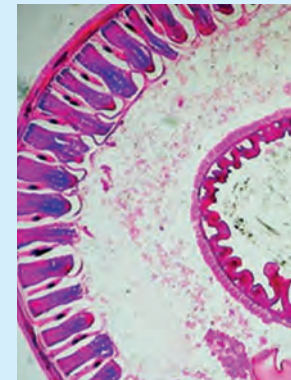
Bright field



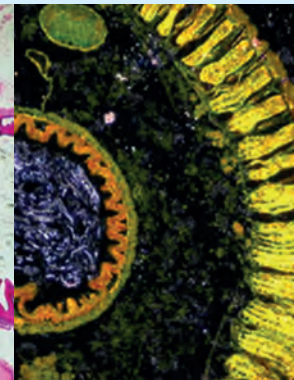
Dark field



Bright field



Dark field



Photonic Optics

More information on: www.dino-lite.eu/photonic

Photonic optics develops high quality LED illumination systems for many different applications, including microscopy. For over 30 years Photonic has been providing modular systems at a good price/performance ratio, making it the ideal partner for Dino-Lite digital microscopes



Photonic PH-Deskset

- ▶ High power LED spot, 2 pieces
- ▶ Flexible arms, 2 individual pieces
- ▶ Individually mounted on a base plate
- ▶ Control unit: brightness and on/off



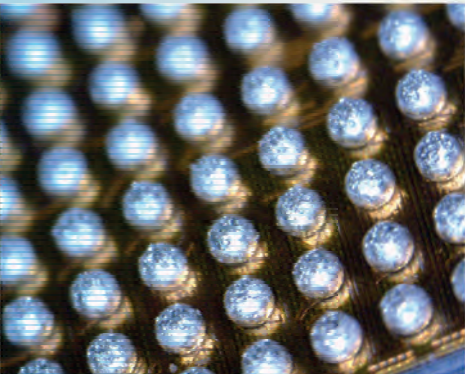
Photonic PH-F1 Set

- ▶ Fiber optic illumination, LED
- ▶ Fiber optic light guide: Double-arm goose-neck
- ▶ High power cold light source, metal housing
- ▶ Adjustable brightness control



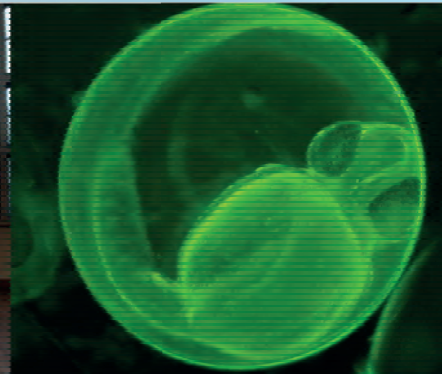
Photonic PH-HPS set

- ▶ High power LED spots
- ▶ 2-arms, flexible
- ▶ MS35/36B stand adapter
- ▶ Control unit: brightness and on/off



Dino-Lite
Digital Microscope

The Industry Standard



Version 2018/Q3 © Dino-Lite Europe/ IDCP B.V. Unauthorized use and/or duplication of this material without express and written permission from us is strictly prohibited.

Dino-Lite Europe is the importer and master distributor for the Dino-Lite products for Europe, Africa and the Middle East. Dino-Lite products are sold by hundreds of local partners, please check www.dino-lite.eu/wheretobuy for the best reseller in your region.